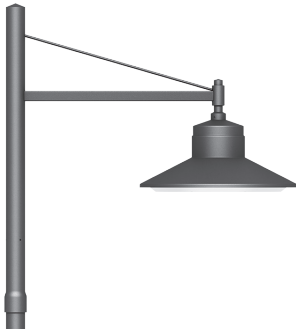
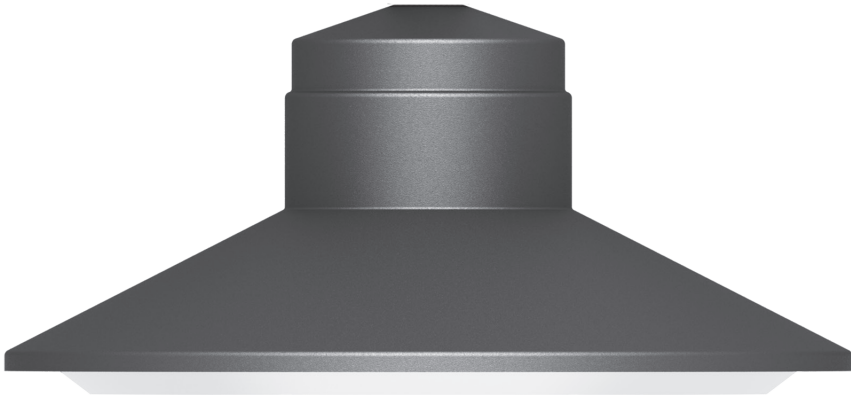
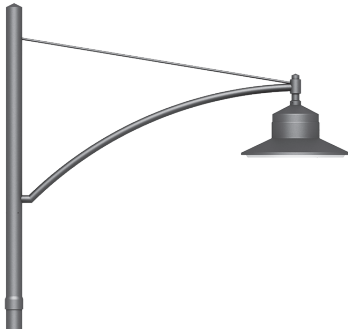


SM



SM-03
↘ p. 136



SM-09
↘ p. 138



SM-12
↘ p. 140

SM-03

1

- 1.1 Color temperature: cool white (5,700 K) / neutral white (4,000 K) / warm white (3,000 K)
- 1.2 Housing accommodates up to 6 LED lighting units (3 LED PCB)
- 1.3 Current feed: 300 mA–600 mA, depending on ambient temperature
- 1.4 Electronic operating device with DALI interface or 1–10 V or stand-alone programmin
- 1.5 LED lighting units each adjustable $\pm 5^\circ$

2

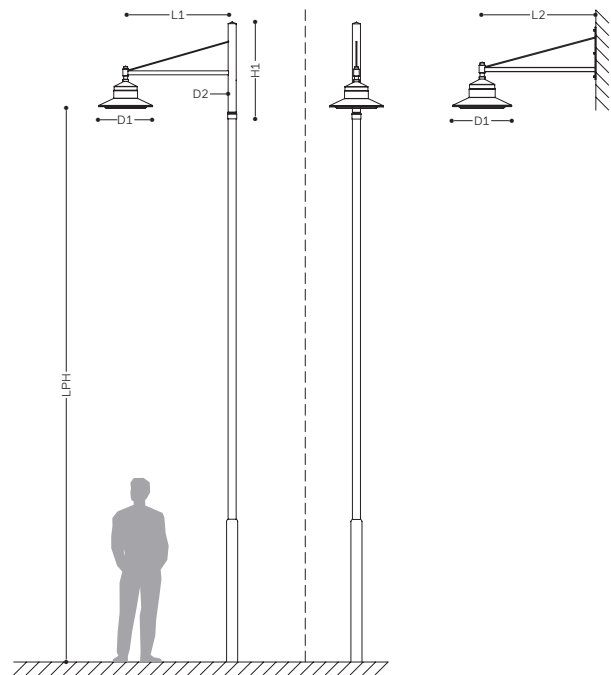
- 2.1 Different pattern characteristics for street, walkway, and large area lighting
- 2.2 LS33, LS33 satiné, LS34, LS34 satiné, LP33, LP33 satiné
- 2.3 Lens made from PMMA, with aluminum support plate

3

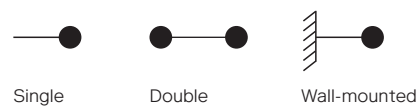
- 3.1 2 model variants: SM620/SM675
- 3.2 Housing made of aluminum, cover in single-pane safety glass (ESG), bracket made of stainless steel
- 3.3 Pole made of hot-dip galvanized steel with cable insertion opening, junction box and service door
- 3.4 Finish: polyester powder coating, anthracite (DB 703), other colors upon request

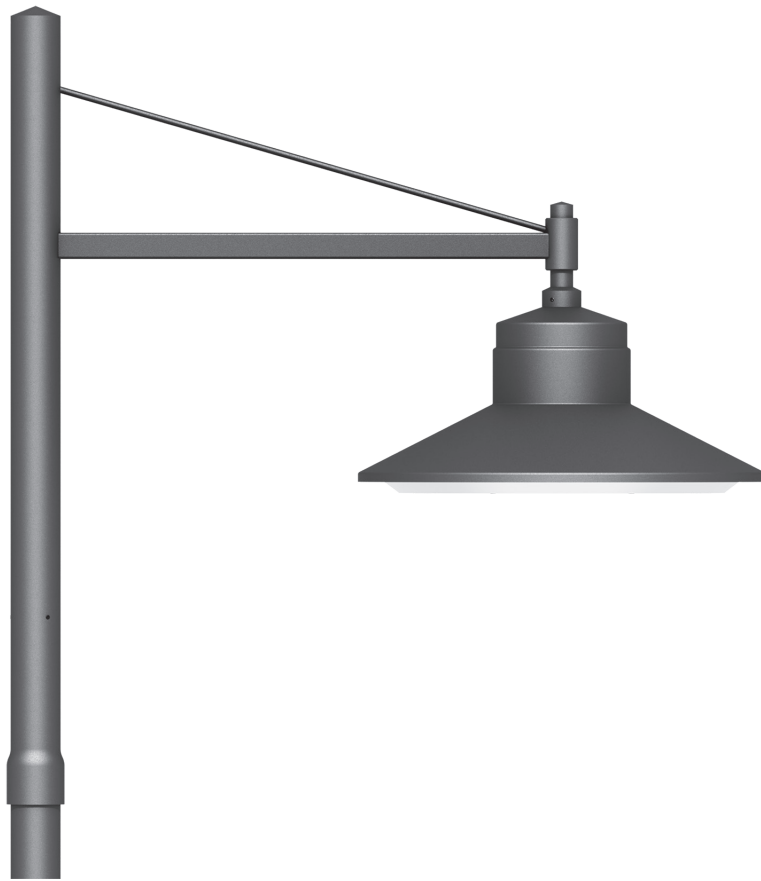
⊕ □ CE IP66 RoHS

Dimension

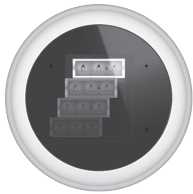


Available Designs

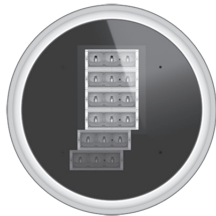




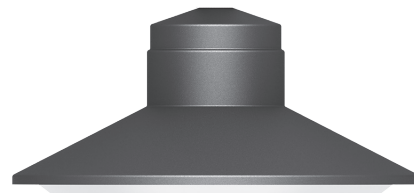
Models / Equipment Variations



SM620
1-4 LU



SM675
5-6 LU



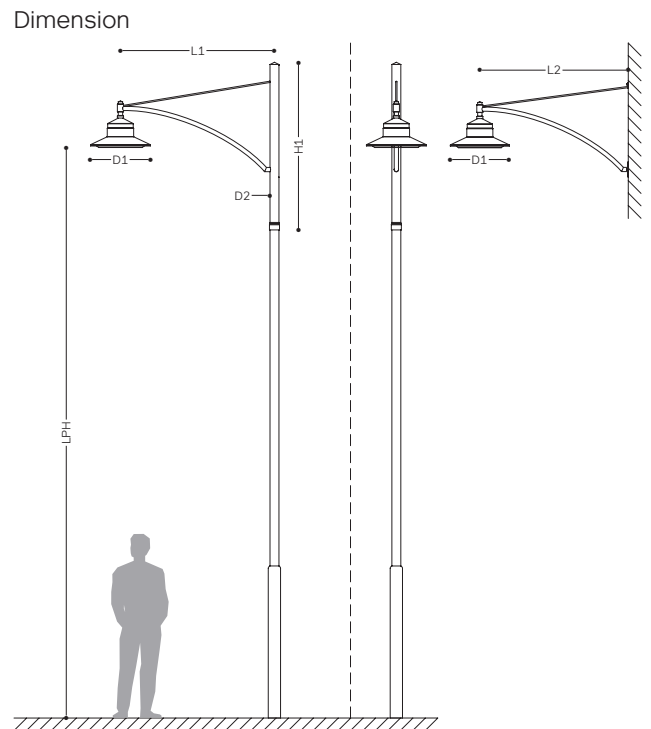
Model	Bracket	LPH[m]	L1[mm]	L2[mm]	H1[mm]	D1[ø mm]	D2[ø mm]	Pole	Lighting units (LU)
SM620	03076	4,5-6,3	800	/	1,215	620	76	MFE	1-4
SM675	03089	6,1-7	1,350	/	1,220	680	89	MVE	5-6
SM675	03101	7,1-8	1,350	/	1,220	680	101	MNE1	5-6
SM675	03114	8,1-10	1,350	/	1,230	680	114	MXE	5-6
SM620-W	/	/	/	770	/	620	/	/	1-4
SM675-W	/	/	/	1,300	/	680	/	/	5-6

SM-09

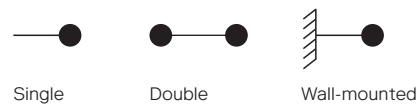
- 1
 - 1.1 Color temperature: cool white (5,700 K) / neutral white (4,000 K) / warm white (3,000 K)
 - 1.2 Housing accommodates up to 6 LED lighting units (3 LED PCB)
 - 1.3 Current feed: 300 mA–600 mA, depending on ambient temperature
 - 1.4 Electronic operating device with DALI interface or 1–10 V or stand-alone programming
 - 1.5 LED lighting units each adjustable $\pm 5^\circ$

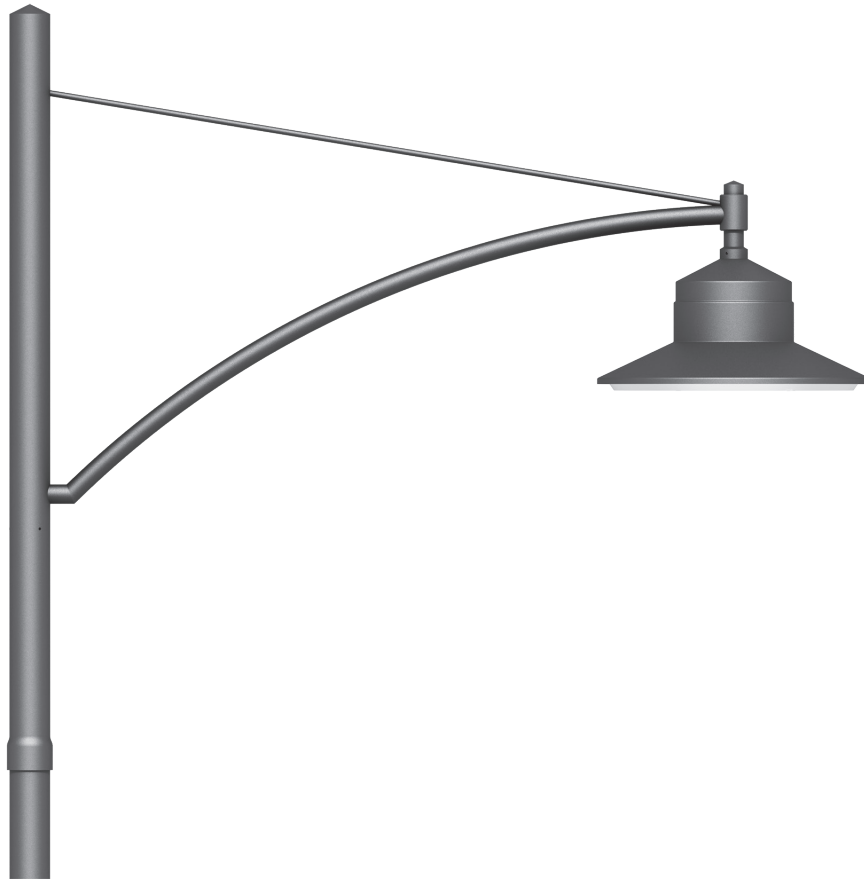
- 2
 - 2.1 Different pattern characteristics for street, walkway, and large area lighting
 - 2.2 LS33, LS33 satiné, LS34, LS34 satiné, LP33, LP33 satiné
 - 2.3 Lens made from PMMA, with aluminum support plate

- 3
 - 3.1 Housing made of aluminum, cover in single-pane safety glass (ESG), bracket made of stainless steel
 - 3.2 Pole made of hot-dip galvanized steel with cable insertion opening, junction box and service door
 - 3.3 Finish: polyester powder coating, anthracite (DB 703), other colors upon request

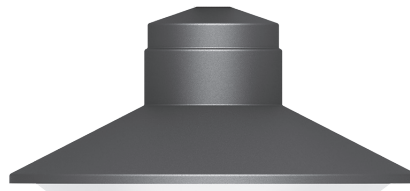
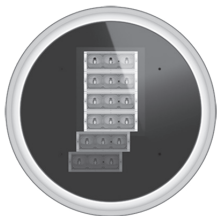


Available Designs





Models / Equipment Variations



SM675
5-6 LU

Model	Bracket	LPH[m]	L1[mm]	L2[mm]	H1[mm]	D1[ø mm]	D2[ø mm]	Pole	Lighting units (LU)
SM675	09101	6.1-6.5	1,750	/	1,900	680	101	MUE	5-6
SM675	09101	7.1-8	1,750	/	1,900	680	101	MNE	5-6
SM675	09114	8-10	1,750	/	1,900	680	114	MXE2	5-6
SM675-W	/	/	/	1,710	/	680	/	/	5-6

SM-12

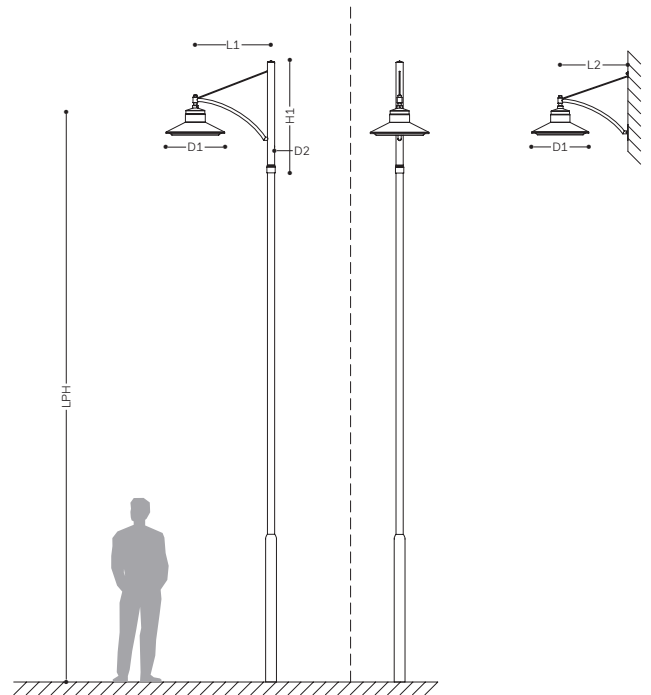
- 1
 - 1.1 Color temperature: cool white (5,700 K) / neutral white (4,000 K) / warm white (3,000 K)
 - 1.2 Housing accommodates up to 6 LED lighting units (3 LED PCB)
 - 1.3 Current feed: 300 mA–600 mA, depending on ambient temperature
 - 1.4 Electronic operating device with DALI interface or 1–10 V or stand-alone programming
 - 1.5 LED lighting units each adjustable $\pm 5^\circ$

- 2
 - 2.1 Different pattern characteristics for street, walkway, and large area lighting
 - 2.2 LS33, LS33 satiné, LS34, LS34 satiné, LP33, LP33 satiné
 - 2.3 Lens made from PMMA, with aluminum support plate

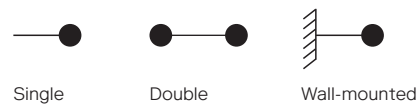
- 3
 - 3.1 2 model variants: SM620/SM675
 - 3.2 Housing made of aluminum, cover in single-pane safety glass (ESG), bracket made of stainless steel
 - 3.3 Pole made of hot-dip galvanized steel with cable insertion opening, junction box and service door
 - 3.4 Finish: polyester powder coating, anthracite (DB 703), other colors upon request

⊕ □ CE IP66 RoHS

Dimension



Available Designs



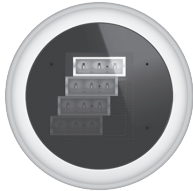
Single

Double

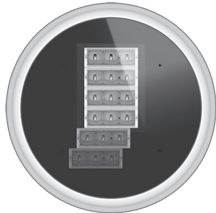
Wall-mounted



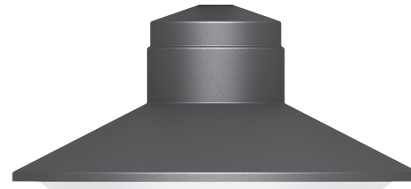
Models / Equipment Variations



SM620
1-4 LU



SM675
5-6 LU



Model	Bracket	LPH[m]	L1[mm]	L2[mm]	H1[mm]	D1[ø mm]	D2[ø mm]	Pole	Lighting units (LU)
SM620	12076	4.5-6.3	800	/	1,190	620	76	MFE	1-4
SM675	12089	6.1-7	950	/	1,790	680	89	MVE2	5-6
SM675	12101	7.1-8	950	/	1,790	680	101	MNE1	5-6
SM675	12114	8.1-10	950	/	1,790	680	114	MXE	5-6
SM620-W	/	/	/	735	/	620	/	/	1-4
SM675-W	/	/	/	930	/	680	/	/	5-6