

AM

↳
ewo.com/AM



AM-04
↳ p. 144



AM-05
↳ p. 146



AM-08
↳ p. 148

AM-04

1

- 1.1 Color temperature: cool white (5,700 K) / neutral white (4,000 K) / warm white (3,000 K)
- 1.2 Housing accommodates up to 6 LED lighting units (3 LED PCB)
- 1.3 Current feed: 300 mA–600 mA, depending on ambient temperature
- 1.4 Electronic operating device with DALI interface or 1–10 V or stand-alone programming
- 1.5 LED lighting units each adjustable $\pm 5^\circ$

2

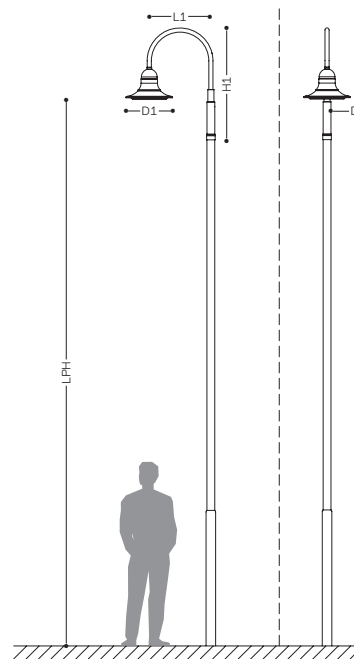
- 2.1 Different pattern characteristics for street, walkway, and large area lighting
- 2.2 LS33, LS33 satiné, LS34, LS34 satiné, LS35, LP33, LP33 satiné
- 2.3 Lens made from PMMA, with aluminum support plate

3

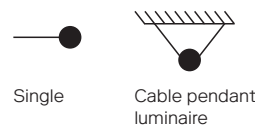
- 3.1 2 model variants: AM620/AM680
- 3.2 Housing made of aluminum, cover in single-pane safety glass (ESG), bracket made of stainless steel
- 3.3 Pole made of hot-dip galvanized steel with cable insertion opening, junction box and service door
- 3.4 Finish: polyester powder coating, anthracite (DB 703), other colors upon request



Dimension

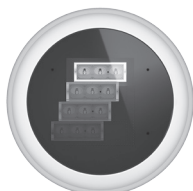


Available Designs

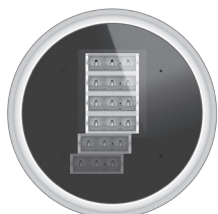




Models / Equipment Variations



AM620
1-4 LU



AM680
5-6 LU



| Model | Bracket | LPH[m] | L1[mm] | L2[mm] | H1[mm] | D1[ø mm] | D2[ø mm] | Pole | Lighting units (LU) |
|-------|---------|---------|--------|--------|--------|----------|----------|------|---------------------|
| AM620 | 04076 | 4.5-6.3 | 600 | / | 1,000 | 620 | 76 | MFE | 1-4 |
| AM680 | 04089 | 6.1-7 | 700 | / | 1,430 | 680 | 89 | MVE2 | 5-6 |
| AM680 | 04101 | 7.1-8 | 900 | / | 1,630 | 680 | 101 | MNE1 | 5-6 |
| AM680 | 04114 | 8.1-10 | 900 | / | 1,640 | 680 | 114 | MXE | 5-6 |

AM-05

1

- 1.1 Color temperature: cool white (5,700 K) / neutral white (4,000 K) / warm white (3,000 K)
- 1.2 Housing accommodates up to 6 LED lighting units (3 LED PCB)
- 1.3 Current feed: 300 mA–600 mA, depending on ambient temperature
- 1.4 Electronic operating device with DALI interface or 1–10 V or stand-alone programming
- 1.5 LED lighting units each adjustable $\pm 5^\circ$

2

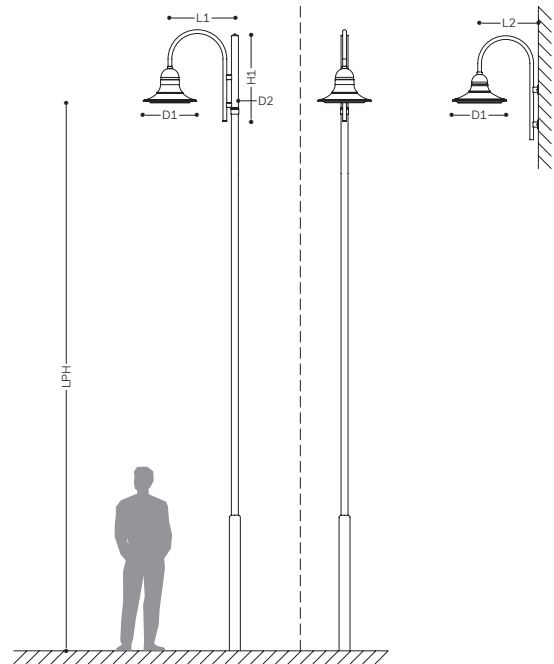
- 2.1 Different pattern characteristics for street, walkway, and large area lighting
- 2.2 LS33, LS33 satiné, LS34, LS34 satiné, LS35, LP33, LP33 satiné
- 2.3 Lens made from PMMA, with aluminum support plate

3

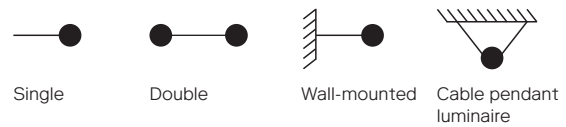
- 3.1 2 model variants: AM620/AM680
- 3.2 Housing made of aluminum, cover in single-pane safety glass (ESG), bracket made of stainless steel
- 3.3 Pole made of hot-dip galvanized steel with cable insertion opening, junction box and service door
- 3.4 Finish: polyester powder coating, anthracite (DB 703), other colors upon request

⊕ □ CE IP66 RoHS

Dimension



Available Designs

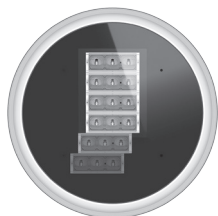




Models / Equipment Variations



AM620
1-4 LU



AM680
5-6 LU



| Model | Bracket | LPH[m] | L1[mm] | L2[mm] | H1[mm] | D1[ø mm] | D2[ø mm] | Pole | Lighting units (LU) |
|---------|---------|---------|--------|--------|--------|----------|----------|------|---------------------|
| AM620 | 05076 | 4.5-6.3 | 690 | / | 1,180 | 620 | 76 | MFE | 1-4 |
| AM680 | 05089 | 6.1-7 | 830 | / | 1,170 | 680 | 89 | MVE2 | 5-6 |
| AM680 | 05101 | 7.1-8 | 1,020 | / | 1,340 | 680 | 101 | MNE2 | 5-6 |
| AM680 | 05114 | 8.1-10 | 1,020 | / | 1,340 | 680 | 114 | MXE1 | 5-6 |
| AM620-W | / | / | / | 680 | / | 620 | / | / | 1-4 |
| AM680-W | / | / | / | 980 | / | 680 | / | / | 5-6 |

AM-08

1

- 1.1 Color temperature: cool white (5,700 K) / neutral white (4,000 K) / warm white (3,000 K)
- 1.2 Housing accommodates up to 6 LED lighting units (3 LED PCB)
- 1.3 Current feed: 300 mA–600 mA, depending on ambient temperature
- 1.4 Electronic operating device with DALI interface or 1–10 V or stand-alone programming
- 1.5 LED lighting units each adjustable $\pm 5^\circ$

2

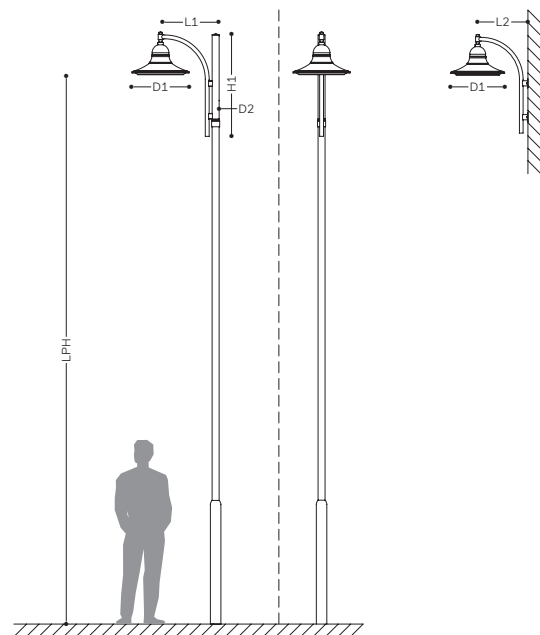
- 2.1 Different pattern characteristics for street, walkway, and large area lighting
- 2.2 LS33, LS33 satiné, LS34, LS34 satiné, LS35, LP33, LP33 satiné
- 2.3 Lens made from PMMA, with aluminum support plate

3

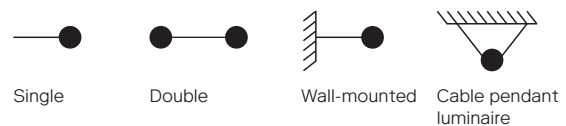
- 3.1 2 model variants: AM620/AM680
- 3.2 Housing made of aluminum, cover in single-pane safety glass (ESG), bracket made of stainless steel
- 3.3 Pole made of hot-dip galvanized steel with cable insertion opening, junction box and service door
- 3.4 Finish: polyester powder coating, anthracite (DB 703), other colors upon request

⊕ □ CE IP66 RoHS

Dimension



Available Designs

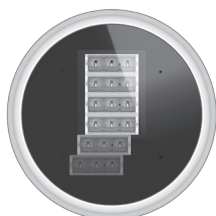




Models / Equipment Variations



AM620
1-4 LU



AM680
5-6 LU



| Model | Bracket | LPH[m] | L1[mm] | L2[mm] | H1[mm] | D1[ø mm] | D2[ø mm] | Pole | Lighting units (LU) |
|---------|---------|---------|--------|--------|--------|----------|----------|------|---------------------|
| AM620 | 08076 | 4.5-6.3 | 600 | / | 1,140 | 620 | 76 | MFE | 1-4 |
| AM680 | 08089 | 6.1-7 | 800 | / | 1,360 | 680 | 89 | MVE2 | 5-6 |
| AM680 | 08101 | 7.1-8 | 980 | / | 1,810 | 680 | 101 | MNE1 | 5-6 |
| AM680 | 08114 | 8.1-10 | 980 | / | 1,810 | 680 | 114 | MXE | 5-6 |
| AM620-W | / | / | / | 580 | / | 620 | / | / | 1-4 |
| AM680-W | / | / | / | 750 | / | 680 | / | / | 5-6 |
| AM680-W | / | / | / | 950 | / | 680 | / | / | 5-6 |