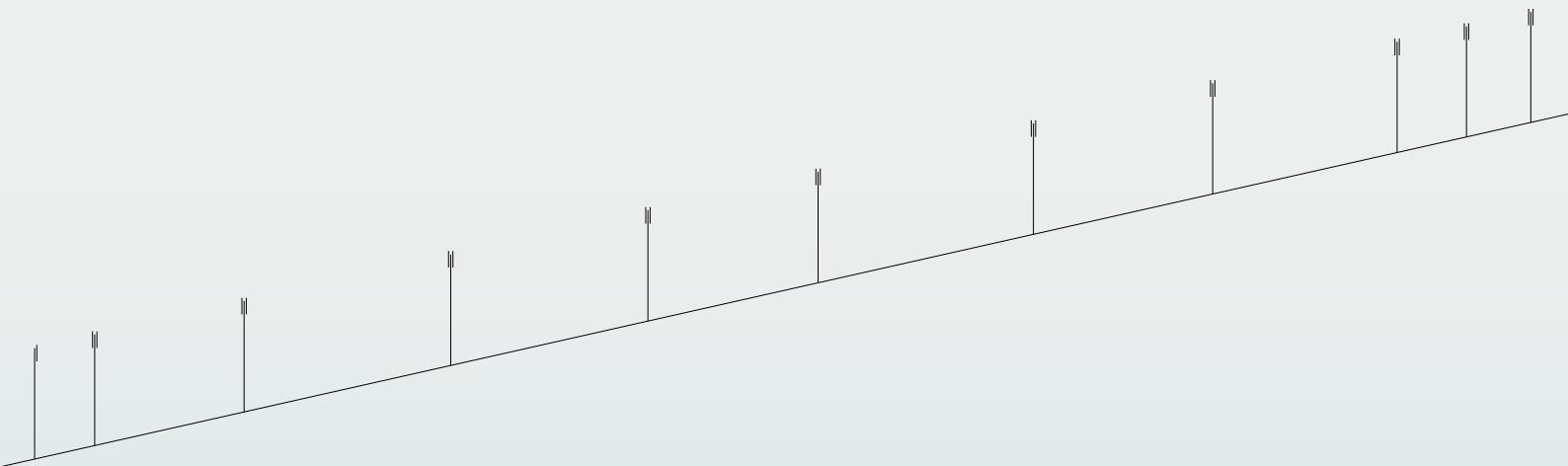


ewo



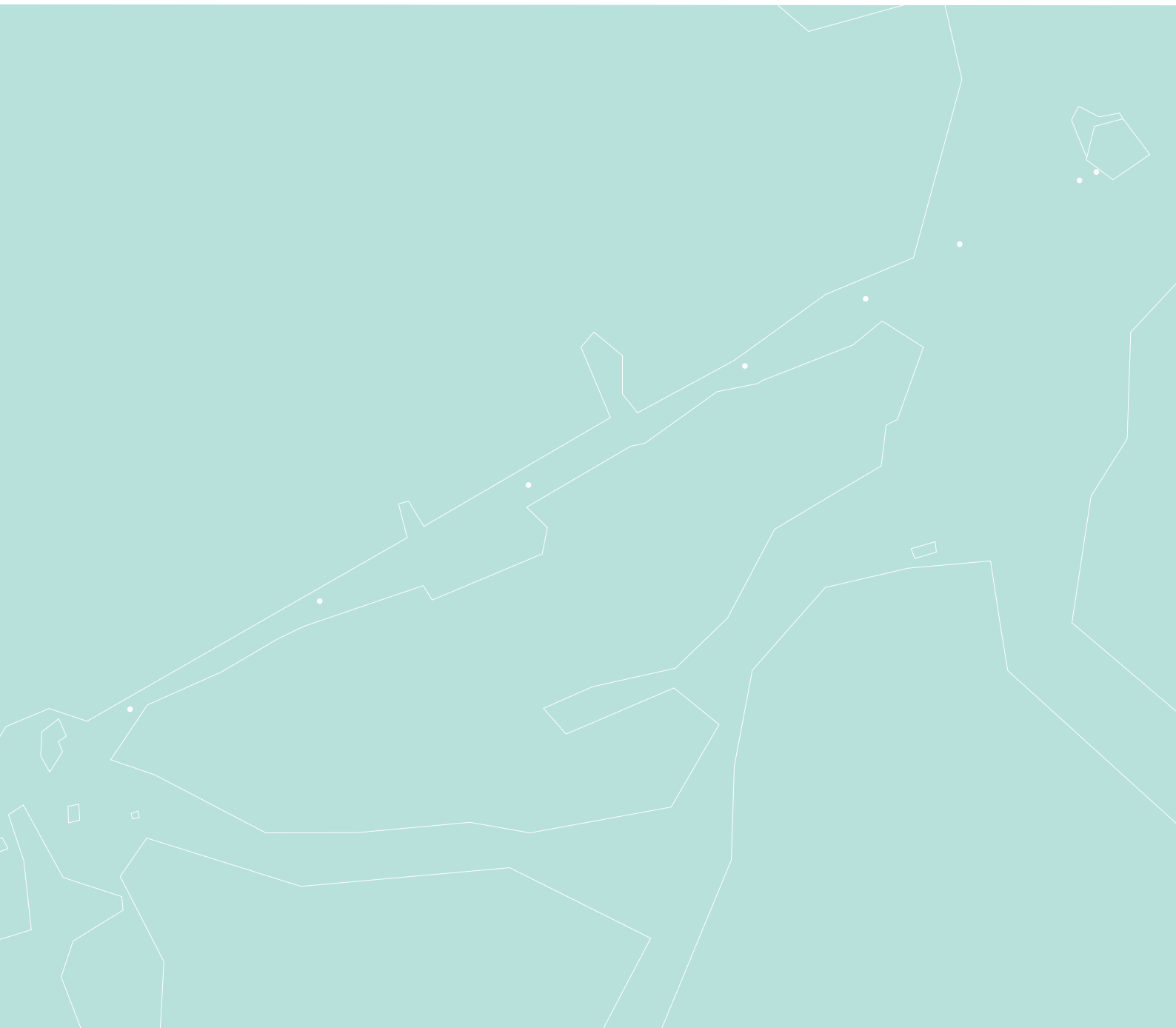
Best Practice

*Lighting for Ski Areas*

# PROJECT OVERVIEW

Spieljochbahn

<i>Project</i>	Spieljochbahn
<i>Type</i>	Public Space
<i>Location</i>	Fügen, Zillertal, Austria
<i>Client</i>	Schultz Gruppe
<i>Luminaire</i>	R4
<i>Lighting Design</i>	Die Lichtplaner Klaus Hochschwarzer
<i>Year of Installation</i>	2017



# PROJECT OVERVIEW

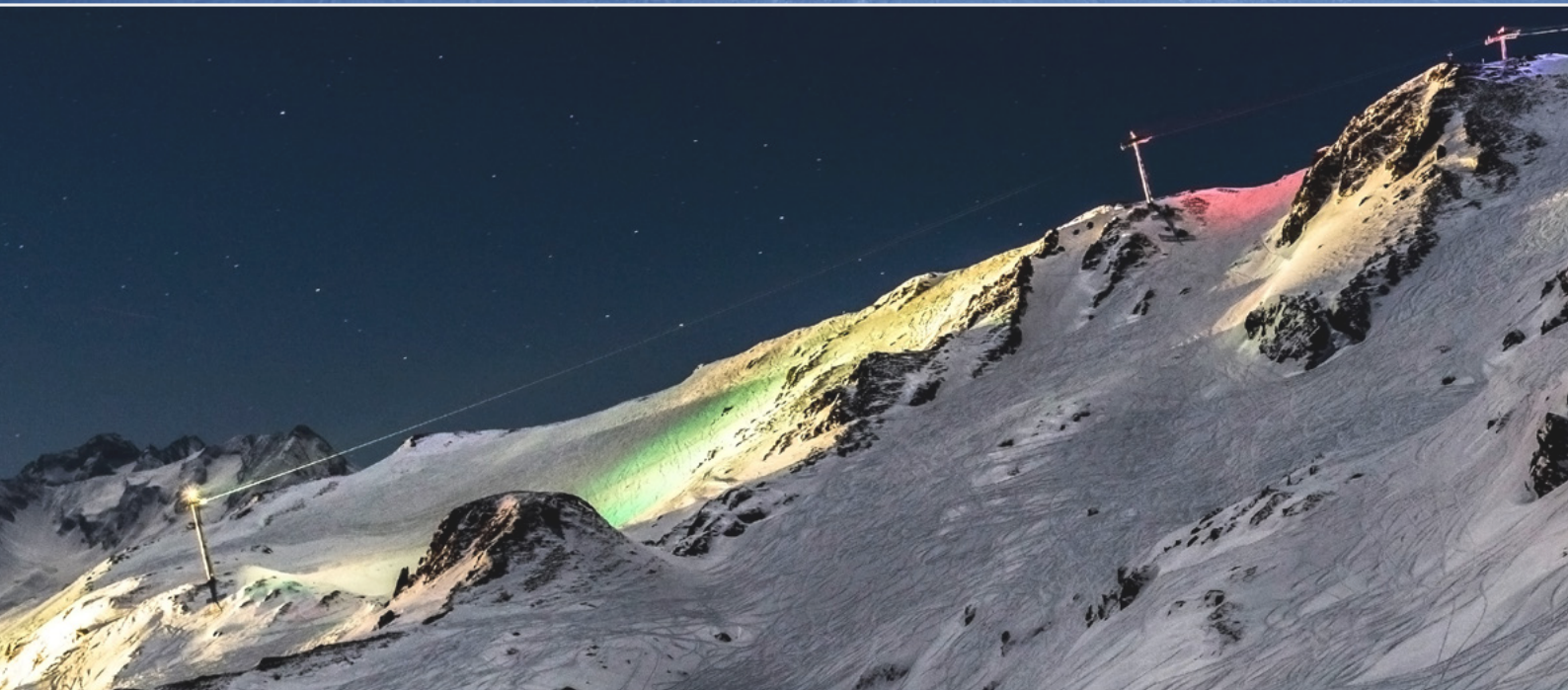
Wimbachexpress

<i>Project</i>	Wimbachexpress
<i>Type</i>	Public Space
<i>Location</i>	Kaltenbach, Zillertal, Austria
<i>Client</i>	Schultz Gruppe
<i>Luminaire</i>	R1 / R2
<i>Lighting Design</i>	Die Lichtplaner Klaus Hochschwarzer
<i>Year of Installation</i>	2018

# CREATING LANDMARKS

Designing Light Experiences

ewo's prowess in supplying illuminations for ski areas is demonstrated by these two stunning colourful installations for LEITNER Ropeways projects, featuring lighting designs by Klaus Hochschwarzer (Die Lichtplaner).



## AN IMMEDIATE RE-ORDER

Success breeds success

Mr Hochschwarzer's impressive Spieljochbahn lighting design, shortly followed by the new Wimbachexpress illuminations, showed a tremendous confidence in ewo's ability to produce large-scale theatrical projects.



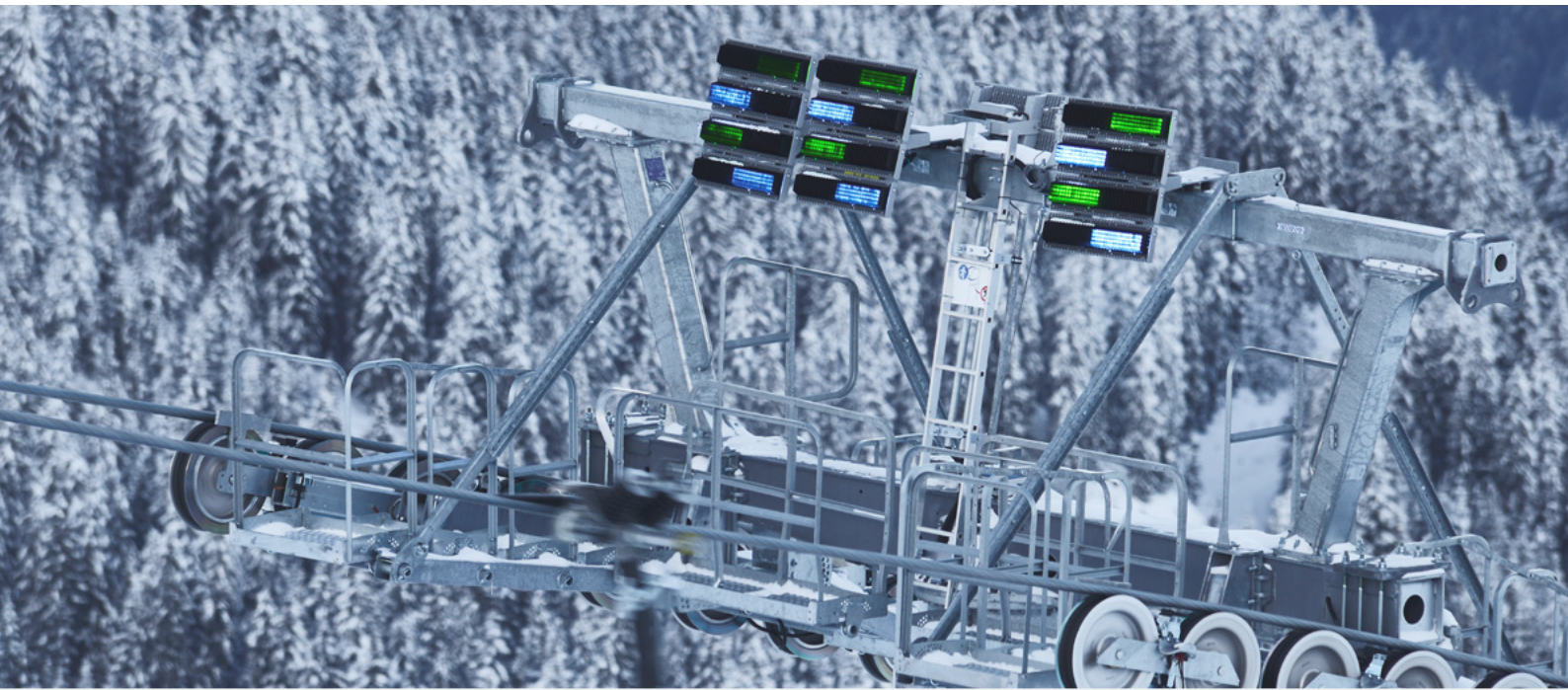
# SPIELJOCH- BAHN

2017

This project showered the landscape of the Spieljochbahn mountain lift with striking RGBW colour combinations, in the Zillertal valley of Tyrol, Austria.

For the 2017-2018 winter season, the cableway was rebuilt by LEITNER Ropeways as a monocable circulating cableway and, with a capacity of three thousand passengers per hour, it doubled the capacity of its predecessor.

ewo worked with lighting designer Klaus Hochschwarzer and LEITNER Ropeways on a concept which, in addition to emergency lighting, radiated different colours onto the route of the lifts. This broke new ground in LED illumination.



# WIMBACH- EXPRESS

2018

Immediately following the success at Spieljochbahn, Mr Hochschwarzer began working with ewo on a similar project which was completed in December 2018, at the Wimbachexpress high-speed ropeway in Zillertal valley.

A popular location for skiers the world over, Zillertal valley's Hochzillertal Alberg is now illuminated with ewo R-System RGBW LED floodlights, which light the ropeway from pole to pole along a 2175 m long, 703 m high track, completed in 2018.

Utilising the R-system slightly differently to Spieljochbahn, this project made use of ewo R1 and R2 RGB-configured floodlights.





# COLOURFUL CONTROL

A surreal experience

DALI controlled illuminations give full power to the customer, allowing for either automatic or manual changes to the colours, as well as the distributions themselves.

Cost effectiveness was achieved through use of DALI-drivers to control RGBW functionality, directly manageable by the client.

# THE IMPORTANCE OF MODULARITY

Our competitive advantage

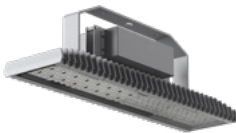
LED components normally reserved for architectural projects (narrow beam optics, RGBW LEDs) were selected here.

The architectural optics were combined with a product normally selected for functional large-area installations (mainly airport apron illuminations).



How did we succeed in creating such a powerful RGBW illumination?

Wimbachexpress



R1



R2

Spieljochbahn



R4

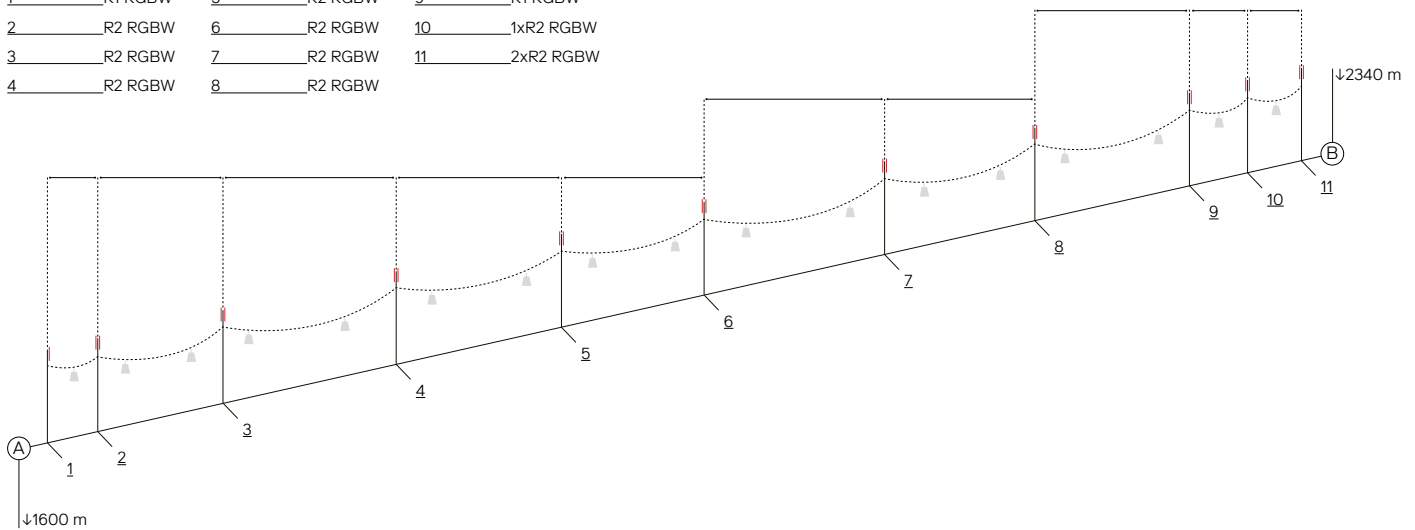
# READY TO ADAPT

Modularity at our core

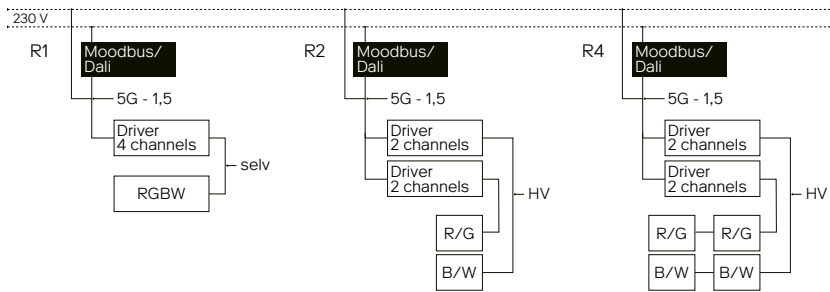
A common solution would be to use large amounts of spot projectors. But ewo's modular system requires only a few adapted high power floodlighting systems, to produce industry-leading results.

LUMINAIRE POSITIONING - WIMBACH

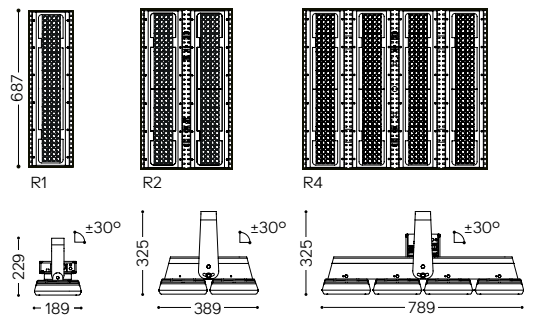
- 1 R1 RGBW      5 R2 RGBW      9 R1 RGBW
- 2 R2 RGBW      6 R2 RGBW      10 1xR2 RGBW
- 3 R2 RGBW      7 R2 RGBW      11 2xR2 RGBW
- 4 R2 RGBW      8 R2 RGBW



RGBW CONFIGURATIONS - WIMBACH & SPIELJOCHBAHN



TECHNICAL DRAWING



MOUNTING

Support With bracket on lift support  
Vertical, with shock absorber

MATERIAL

Bracket Hot-dip galvanized steel  
Housing In die-cast aluminium, with front single-pane safety glass (ESG) cover  
Lens PMMA  
Finish Polyester powder coating silver (RAL 9006 / DB 701)

LENS SPECS

Type AG01 Narrow Spot 8°

PRODUCT SPECS

Model R1 / R2 / R4  
Output 700 mA  
Controlled by DALI / Moodbus / Radio 433 MHZ  
LED Quantity R1 → 128 R2 → 256 R4 → 512

LENS



AG01 Narrow Spot 8°

LIGHT DISTRIBUTION



COLOUR TEMPERATURE

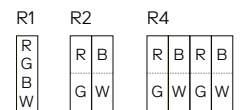


Neutral white → 4,000 K  
CRI ≥ 70

RGBW



RGBW POSITIONING



# TECHNICAL INFORMATION

ewo's modular concept

The R-System panels for these two projects are arranged on the skilift poles, with distance of separation between poles dictating the level of illumination required.

All luminaires are specially fitted with RGB LEDs, with the systems at a height of 1600 up to 2340 m above sea level.





ewo creates high-quality lighting systems for public spaces. At the main facility of this family-run business, headquartered in South Tyrol, ewo develops products which illuminate streets, squares, buildings and walking trails, urban gathering points and airports. A modular LED unit forms the basis of the company's sustainable and efficient lighting projects, irrespective of scale.

The company's progressive technology, know-how and open creativity made it a trendsetter for the sector. Even in the most challenging scenarios, ewo provides custom-tailored products and lighting designs for distributing and controlling light, features that are a notable standard of quality in the design of public spaces.

© 2019 ewo srl/GmbH

*Photography: Florian Brenner, Oskar DaRiz*

*Version 1*

*We reserve the right to make technical changes.*

ewo srl/GmbH

Via dell'Adige/Etschweg 15

IT-39040 Cortaccia/Kurtatsch

Tel +39 0471 623087

mail@ewo.com

ewo Deutschland GmbH

Gotzinger Straße 8

DE-81371 München

Tel +49 (0)89 52030729

germany@ewo.com

ewo Austria GmbH

Grabenweg 3a

AT-6020 Innsbruck

Tel +43 (0)650 3064 799

austria@ewo.com



