



# Transsensorial Gateway / noa\* network of architecture



 Save this project



## INSTALLATION · MILANO, ITALY

 Architects: noa\* network of architecture

 Area: 50 m<sup>2</sup>

 Year: 2021

 Photographs: Alex Filz

 Lighting technical support: ewo

Sound Design: Ebner Film + Music Lois Lane



*Text description provided by the architects.* Architecture and people are closely intertwined and through the creation of a space, the connection between the individuals within a space is encouraged. This was the starting point for the installation designed by noa\*. The concept proposes a kind of light and sound landscape, which welcomes visitors as they enter the exhibition. On either side of the doorway, a crown of structural light-beams open up, each one at different heights, visually amplifying the sequence of the 17th-century portico that serves as the setting for the installation.



The result is a sculptural work that combines various elements, including light, sound and movement, in direct dialogue with people and with the space. The light beams create relationships, building 'bridges' between people. The light reacts to the presence of visitors and at the same time interprets the way they relate to each other.



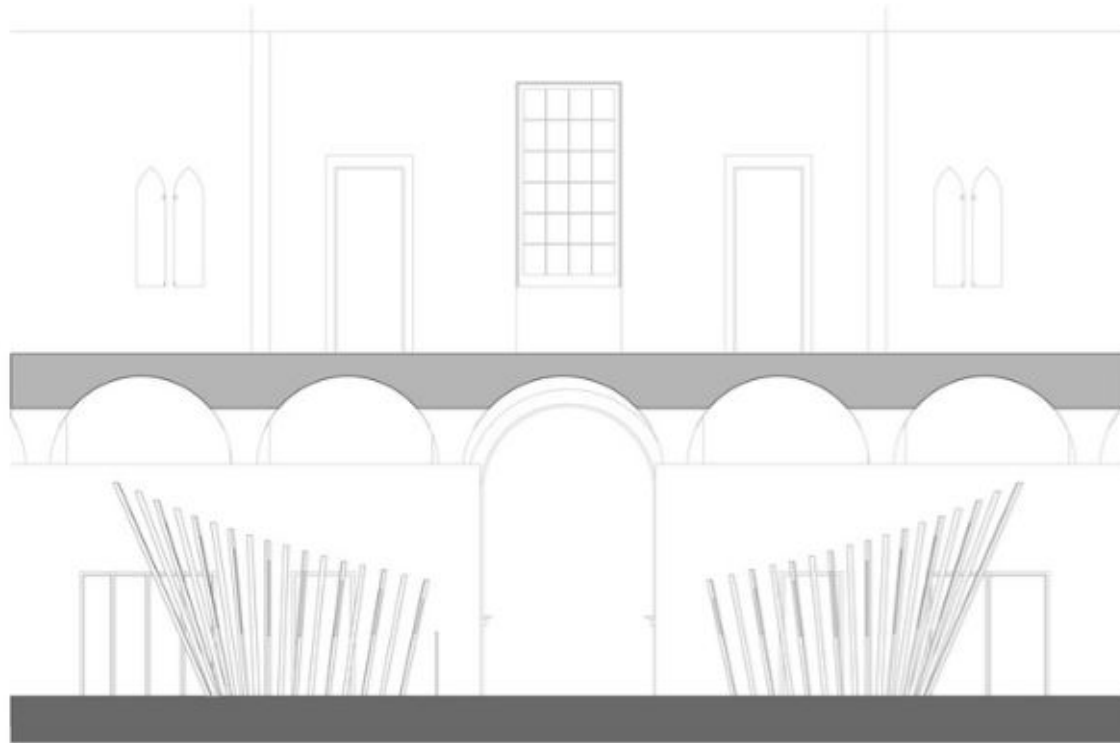
The result is a sculptural work that combines various elements, including light, sound and movement, in direct dialogue with people and with the space. The light beams create relationships, building 'bridges' between people. The light reacts to the presence of visitors and at the same time interprets the way they relate to each other.



Through a 'transsensorial' mechanism, a light and musical score is created that is not only closely related to mass and volume, and thus to the number of visitors, but also becomes the driving force behind the installation. The result is an original and unique choreography of light and sound, which further enriches the visitors' emotional journey.

The 34 beams forming the crown of lights on either side of the entrance are made of stainless steel and coated with mirror, amplifying the presence of the people encompassing the space around them. Each element varies in height from 2.50 m to 4.00 m and has a triangular cross-section of 7x7 cm<sup>2</sup>.

*Front View*



130

The technical skill and know-how of the South Tyrolean company EWO has made it possible to translate the concept of interactivity into a functioning system of light and technology. The steel light-beams are illuminated by LED units which are installed vertically and equipped with an innovative anti-glare technology called ewoLightTile.



The sound, by Ebner Film + Music, was designed especially for this installation and programmed to react to the diversity of situations detected by the sensors. It is regulated by loudspeakers placed in the exhibition area of the installation, while the sensors that control light and sound according to the interactions between people are distributed along the 34 beams.

### Project gallery

